

C351 Specifications

Type:	Desktop Full-Colour Copier/Printer/Scanner	Warm-up Time:	99 seconds or less	Paper Weights:	60-256g/m ²
Resolution:	Scanning: 600dpi x 600dpi Printing: 600dpi x 1,800dpi equivalent	First-copy Time:	Colour: 8.5 seconds or less (A4 Crosswise), B/W: 6.8 seconds or less (A4 Crosswise)	Multiple Copy:	Plain Paper (60-90g/m ²), Thick Paper (91-256g/m ²), OHP Sheet*, Postcards*, Envelopes*, Label sheets*
Gradation:	256 gradations	Copy Speed:	Colour: 35 pages/min (A4), 19 pages/min (A3), B/W: 35 pages/min (A4), 19 pages/min (A3)	Power Requirement:	1-999
Memory:	512MB (Standard)	Magnification:	Preset: Standard: 1:±0.5% or less Enlargement: 1:1.15/1.22/1.41/2.0	Power Consumption:	220-240V, 8A (50Hz)
HDD:	40GB (Standard)	Zoom:	from 25% to 400% in 0.1% increments, 3 user settings	Dimension:	706 (W) x 765 (D) x 770 (H)mm (27-3/4" x 30-1/4" x 30-1/4")
Type of Originals:	Sheets, Book, 3-D Objects	Paper Capacity:	Standard: 900 sheets (First drawer: 250 sheets, Second drawer: 500 sheets, Multiple Bypass: 150 sheets)	Weight:	110kg (242-1/2lb.)
Original Size:	Max.: A3 (Ledger)				*First drawer and Multiple Bypass
Output Size:	A6 to A3 (4-1/4" x 5-3/4" to 11-3/4" x 16-1/2"), A3 Wide: 311 x 457mm (12-1/4" x 18"), Postcard: 100 x 148mm (4" x 5-3/4")				

Standard Controller Specifications

Type:	Embedded	Fonts:	PCL Font (80 fonts) Bitmap Font (1 font) PS Font (136 fonts)	Speed:	38 pages/min*
CPU:	PPC750FX/600MHz*	Interface:	Standard: Ethernet (10BASE-T, 100BASE-TX) Optional: IEEE1284 (Compatible/Nibble/ECP), USB2.0	Scan Destination:	Scan to E-mail, Scan to FTP, Scan to SMB, Scan to Box
Memory:	512MB (Standard)*			Interface:	Standard: Ethernet (10BASE-T, 100BASE-TX)
Speed:	Colour: 35 pages/min (A4), 18 pages/min (A3) B/W: 35 pages/min (A4), 18 pages/min (A3)			Protocol:	TCP/IP, SMTP/POP3, FTP, LDAP, HTTP
Resolution:	600dpi x 1,800dpi equivalent			Operating System:	Windows 98SE/Me, Windows NT4.0
Printer Languages:	PCL XL Emulation, Post Script 3 Emulation			Data Format:	TIFF, PDF, JPEG, Compact PDF
Network Protocol:	TCP/IP, IPX/SPX (NDS), SMB (Net BEUI), LPD, IPP1.1, SNMP, HTTP			Driver:	TWAIN
Operating System:	Windows 98SE/Me, Windows NT4.0 SP6/2000/XP, Windows Server 2003, Mac OS 9.x-10.3				*A4 Crosswise at 600dpi

Optional Controller (IC-402) Specifications

Type:	Embedded	Interface:	Standard: Ethernet (10BASE-T, 100BASE-TX, 1000BASE-TX), USB2.0	Operating System:	Windows 98SE/Me, Windows NT4.0 SP6/2000/XP, Windows Server 2003, Mac OS 8.6/9.x/OS X
CPU:	Intel Celeron/2GHz			Data Format:	TIFF, PDF, JPEG
Memory:	256MB (Max.: 512MB)			Driver:	TWAIN
Speed:	Colour: 35 pages/min (A4), 18 pages/min (A3) B/W: 35 pages/min (A4), 18 pages/min (A3)				*A4 Crosswise at 600dpi
Resolution:	600dpi x 1,800dpi equivalent				
Printer Languages:	PCL6, PostScript 3 (NativePDF ver1.5)				
Network Protocol:	TCP/IP, IPX/SPX (NDS), SMB, LPD, IPP1.1, SNMP, HTTP, Port9100, EtherTalk				
Operating System:	Windows 98SE/Me, Windows NT4.0 SP6/2000/XP, Windows Server 2003, Mac OS 8.6/9.x/OS X				
Fonts:	PCL Font (80 fonts) Bitmap Font (1 font) PS Font (136 fonts)				

System Option

Job Separator JS-601

When attached to the FS-507, this becomes the fax/print/copy output separator tray.



Original Cover OC-501



Reverse Automatic Document Feeder DF-601

Can set up to 100 sheets of two sided originals (80g/m²) for automatic duplex copying.



Punch Kit PK-501

Punches holes; combines with the Finisher FS-603.



Image Controller IC-402

Video Interface Kit VI-502

Fax Kit FK-502

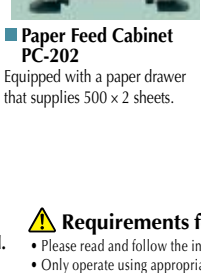
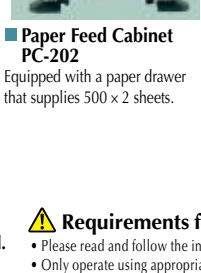
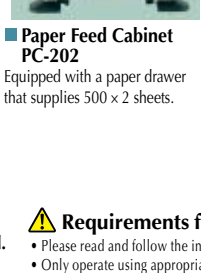
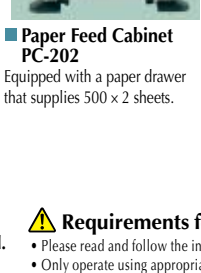
Mount Kit MK-703

Mount Kit MK-704

Local Interface Kit EK-702

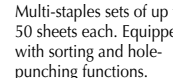
Mechanical Counter MC-501

Working Table WT-501



Finisher FS-507

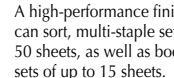
Multi-staples sets of up to 50 sheets each. Equipped with sorting and hole-punching functions.



STAPLES MS-5D

Finisher FS-603

A high-performance finisher that can sort, multi-staple sets of up to 50 sheets, as well as booklet bind sets of up to 15 sheets.



Product appearance, configuration and/or specifications are subject to change without notice.

bizhub and PageScope are registered trademarks or trademarks of KONICA MINOLTA BUSINESS TECHNOLOGIES, INC. Windows is a registered trademark or trademark of Microsoft Corporation.

Adobe and PostScript are registered trademarks or trademarks of Adobe Systems Incorporated. All other brand and product names are registered trademarks or trademarks of their respective owners.

* As an ENERGY STAR Partner, KONICA MINOLTA BUSINESS TECHNOLOGIES, INC. has determined that this product meets the ENERGY STAR guidelines for energy efficiency.

* ENERGY STAR is a U.S. registered mark.

Konica Minolta copiers and multi-functional peripherals are designed with the environment in mind.



- Meets ENERGY STAR Guidelines
- The Use of Recycled Materials
- Production at ISO-Certified Factories

Requirements for safe use

- Please read and follow the instruction manual to ensure safe operation.
- Only operate using appropriate power supply and voltage.
- Connecting the earth wire to an inappropriate place may cause explosion or electric shock. Please connect accordingly (Taiwan and the Philippines only).

KONICA MINOLTA BUSINESS TECHNOLOGIES, INC.

1-6-1 Marunouchi Chiyoda-ku, Tokyo, Japan
http://www.biz.konicaminolta.com

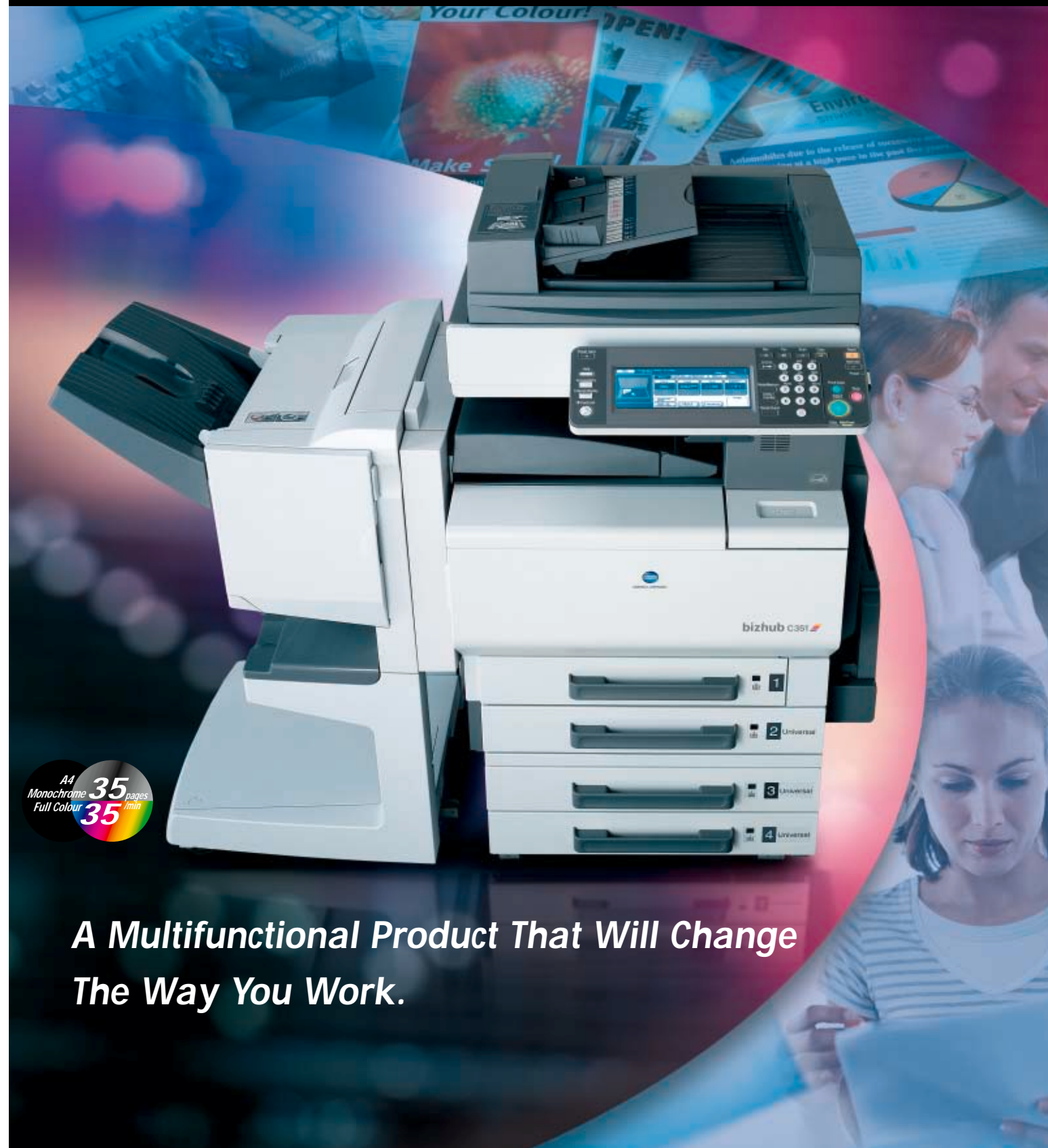
PRINTED WITH SOYINK This catalogue was printed using recycled paper and soy ink.

9251-3148-01 O507(E)-A1 Printed in Japan



KONICA MINOLTA

bizhub c351



A4 Monochrome 35 pages/min
Full Colour 35 pages/min

A Multifunctional Product That Will Change The Way You Work.

The essentials of imaging

When it comes to making your office run more smoothly, the bizhub C351 means business.

The bizhub C351 takes your business seriously. With the C351 all of your document management needs are handled in one convenient place. The C351 does it all. Copy, print, scan or fax*—this versatile business tool lets you create a seamless network environment where high functionality and superior colour documents help your business to succeed. *Optional.



Scan and Send....P4.5
Scanning colour or black-and-white documents at a swift 38 pages/min, the C351 lets you turn paper documents into versatile electronic data as quickly and easily as making a photocopy or sending a fax. The C351 can also distribute the scanned data virtually instantly through the network.



Data HandlingP6
Scanned data and other data sent to the C351 can be stored in "Boxes" on the C351 hard disk drive. This gives you an easy, efficient way to handle, share or distribute data.

FAXP7
Equipped with G3 fax functions, the C351 lets you send faxes quickly, easily and with outstanding image quality. The C351 can also receive fax data and store it in a file Box for retrieval.



Security.....P8
Use of a password protection system and encryption protocol help safeguard your company's proprietary information or confidential data. The C351 provides a safe, reliable environment for handling sensitive data.

Management.....P9
The C351 provides powerful management support functions. It lets you utilise information more effectively, and set up and manage the network easily and efficiently.



bizhub

Introducing Konica Minolta's bizhub. An innovative new brand that lets you open new doors to success.

■ **Freely conduct business—regardless of time or place.**

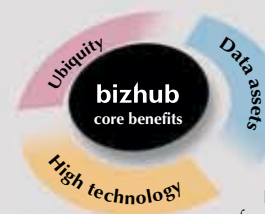
The power of freedom. The freedom to access the information you need, anytime from anywhere, to take efficiency to the maximum. That's what Konica Minolta's bizhub products are all about. Whether at home, in transit, or even at a client's office, no matter where you're connected with bizhub, you're doing business faster and smarter than ever before.

■ **Put yourself at the forefront of information application.**

Exchange. Enhance. Manage. With bizhub's innovative technology, you'll adeptly use information in ways that never existed before. You'll access seamlessly while increasing the value of information by sharing, enhancing, and more efficiently managing it, thus creating a valuable pool of data in the process. bizhub gives you the ability to convert information into assets.

■ **Connecting people through a reliable, state-of-the-art technology.**

bizhub's advanced technology arms you with a host of empowering tools. Innovative functions, high-quality imaging, and user-friendly operation all working fluently together to bring you to a higher level of productivity. So connect with bizhub and connect with a more intelligent way of doing business.



The core benefits inherent in all Konica Minolta bizhub products.

Ubiquity. Data assets. High technology. At Konica Minolta, strict attention is always focused on ensuring that these three benefits are at the heart of every bizhub product. Because it's these core benefits that empower you with the freedom to do business more intelligently.



bizhub
C351

Document Output...P10.11

The versatile C351 is compatible with a variety of protocols for use in a number of different kinds of networks. Also equipped with advanced booklet production and finishing functions and delivering super-fast output - 35 pages/min in full colour or black-and-white - the C351 gives you the power to create visually impressive, high-quality printed materials.

High-Quality & High-Speed...P12

The C351 provides superior reproducibility with both text and photos. This high-performance unit delivers the outstanding image quality demanded in offices and graphic design.

Fiery Image Controller...P13

The Fiery Image Controller supports graphic design professionals by making it possible to produce output in a PostScript3 environment.

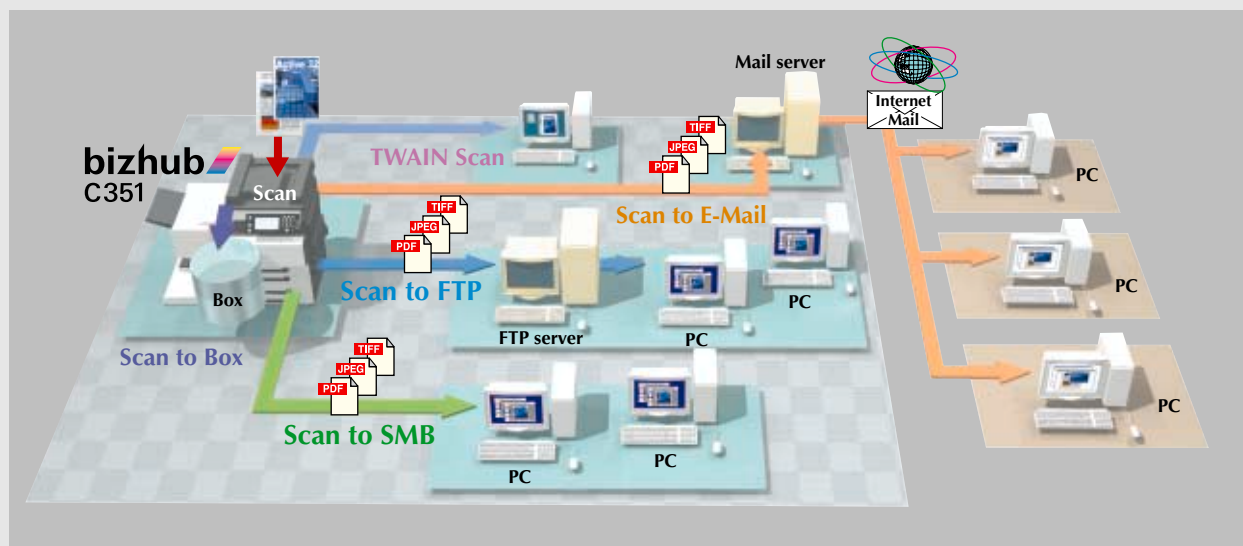
Universal Design...P14.15

With the end user in mind, the C351 incorporates universal design elements throughout its structure, design and styling. For example, the control panel is easy to use and the paper supply is easy to set.

Scan & Send

With the ability to convert paper documents into versatile electronic files, the bizhub C351 lets you distribute, share, and use data in a number of productive ways. And talk about speed, using the standard Automatic Document Feeder which handles a large number of originals, the C351 scans colour or black-and-white documents at a swift 38 pages/min.

Sharing the scanned data is amazingly simple. The C351 converts your document to a PDF, TIFF or JPEG file. Then, to distribute, simply specify a destination on the control panel and the C351 sends the file directly to a server, a co-worker's PC, or anywhere else you desire.



Scan to FTP

Scanned data is saved on an FTP server, where it allows any network PC to download and access the data whenever necessary.

Scan to E-mail

To make data easy to handle, scanned data is sent as an e-mail attachment in PDF, TIFF or JPEG format. This lets you send data quickly and in colour, helping to increase business efficiency.

Scan to SMB

Scanned data goes directly to a shared folder in a PC rather than to a server. This provides fast transfer for networks that do not have a dedicated server. Plus, you can browse through shared folders on the network from the C351's control panel.

Scan to Box*

Scanned data is sent to the C351's hard disk drive and stored in "Boxes" for access by individual users, project teams or departments.

*Cannot be used when the optional Image Controller IC-402 is mounted.

TWAIN Scan

By using the TWAIN driver, text and graphics can be transferred to a client PC. You can also download data with an application that supports TWAIN.

High-Speed Network Scanning

The standard Automatic Document Feeder holds up to 100 sheets and allows scanning of colour or black-and-white documents at a rapid 38 pages/min*. The C351 can also scan mixed-size originals without interruption.

*35 pages/min with the optional Controller IC-402.

2,100 Address Capacity

With the ability to hold 2,000 individual and 100 group e-mail, fax*, and Box addresses in the Address Book, the C351 can send data quickly and easily to numerous destinations at once. Plus, you can register transmission settings such as file format and resolution. The C351 supports the Lightweight Directory Access Protocol (LDAP) for accessing directory databases on the network and registering retrieved addresses.

*Optional.



One-Scan ACS

Supporting quick operation, the ACS (Auto Colour Selection) detects whether a page is colour or black-and-white without needing to pre-scan, even in mixed colour and black-and-white documents.



Compact PDF Function*

When scanning an original, this function detects the text and image areas of a document, and uses the optimal compression ratio for each. This means that colour documents, which were previously hard to handle because of their large data volume, can now be easily distributed.

*Cannot be used when the optional Image Controller IC-402 is mounted.



Data Handling

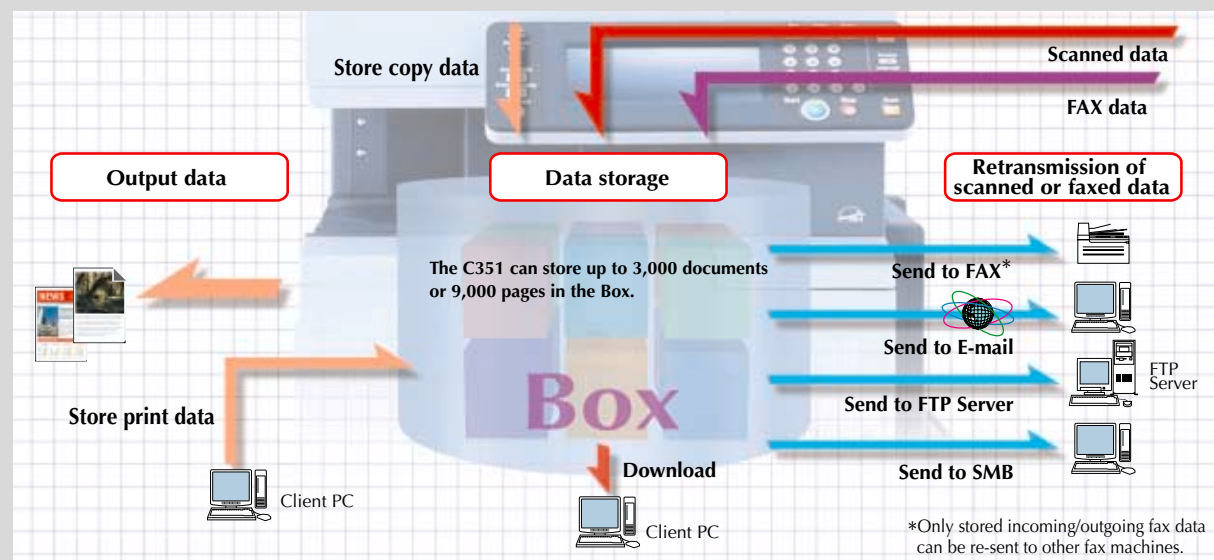
For highly efficient sharing and distributing of print, graphic, and other data, simply store your data in "Boxes" provided on the C351's large-capacity hard disk drive. Up to 1,000 Boxes can be created for either shared or private access. Furthermore, you can assign Boxes to an individual, a project team, or a particular company department.

FAX*

In today's business world, a fax is still a vital tool. And the C351's versatile fax functions, which include its ability to store incoming fax data on a hard disk drive, high-speed transmission, and superior image quality will no doubt keep you highly competitive.

*Optional.

The C351's Box function makes it incredibly simple to manage, share, distribute, and output copied, scanned, printed or faxed data. You can store up to 3,000 documents or 9,000 pages in the C351's hard disk drive, and print out or forward the stored data as needed—letting you manage data files more effectively than you ever thought possible.



Public User Box/Personal User Box

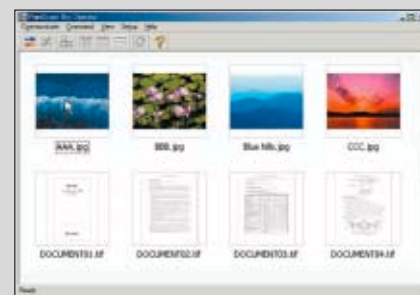
For efficient document management, you can create up to 1,000 Boxes. The Public User Box allows stored data to be openly shared. The Personal User Box, which is password protected, restricts access to data by unauthorised people. By setting time restrictions on the stored data, the data can only be shared for a limited period of time.



PageScope Box Operator

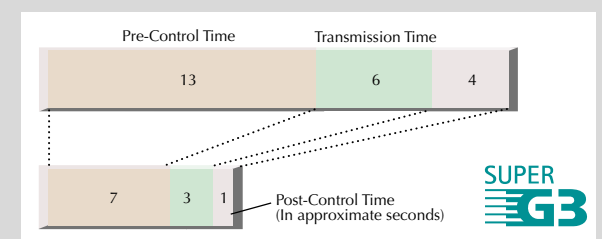
Scanned data stored in a Box can be downloaded and accessed by anyone on a network PC.

- Multi-file preview: Enables you to find a particular file with just a glance.
- You can print out scanned image data that has accumulated from your PC.
- You can rename or delete files in a Box directly from your PC.
- PDF/TIFF/JPEG files in the Box can be easily converted to a compact PDF. This reduces the file size and eases the burden on the network and hard disk drive when sending e-mail attachments and saving the data on PCs.



Super G3 Fax

Supporting Super G3 standards and JBIG compression/decompression, the C351 delivers economical, high-speed, high-quality fax communication over ordinary phone lines. An A4 document can be sent in less than 3 seconds.



Fax Stored in a Box

Fax data can be stored in a Box and be shared or distributed as documents. To reduce paper waste, you can print out only the data you need. As a backup, you can save the data in the Box on the hard disk drive at the same time as sending a fax.

FAX Kit FK-502 Specifications

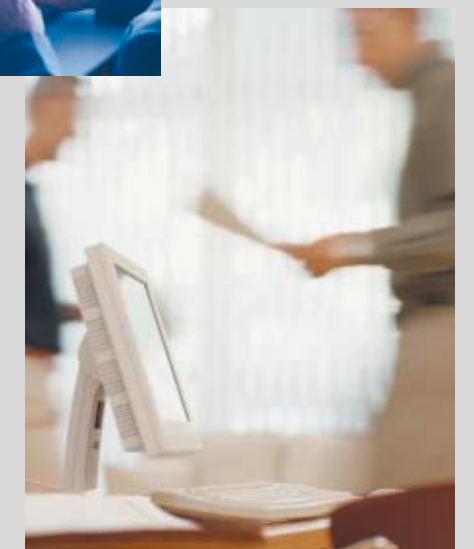
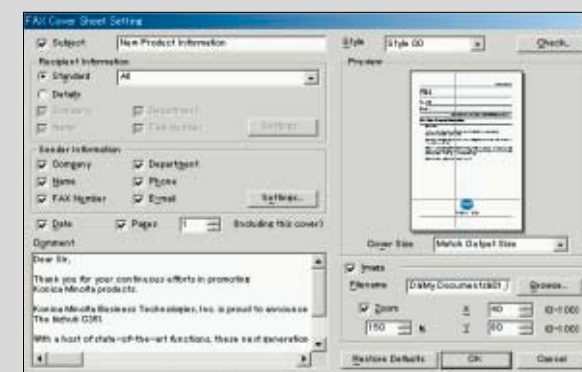
Transmit Original Size:	A3 (max.)
Receiving Paper Size:	A5 - A3
Communication:	ECM / G3 (Super G3)
Line Density:	G3: 8 × 3.85, 8 × 7.7, 8 × 15.4, 16 × 15.4 line/mm
Transmission Speed:	Less than 3 seconds (V.34, JBIG)
Modem Speed:	2.4kbps - 33.6kbps
Compression Method:	MH / MR / MMR / JBIG
Compatible Lines:	PSTN, PBX / NCC, fax line (G3)
Scan Speed:	1 sec. (A4 / Fine Mode)
Speed Dial:	2000
One Touch Programme:	400
Group Dial:	100

One-Touch Dial and Group Dial

Up to 400 one-touch e-mail addresses and fax numbers, 2,000 speed-dial addresses and numbers, and 100 groups of addresses and numbers are at your fingertips with this timesaving function.

PC-Fax Function

This function enables you to send data from your PC directly to an outside fax machine. You can create a cover sheet from the driver screen on your PC and attach it to the document. And, since there's no need to print out the data before faxing, image degradation and paper waste are reduced.



Security

Information is valuable. Keeping it confidential is critical. That's why the C351 is equipped with a wide array of security functions designed to ensure that sensitive corporate and personal information can be accessed only by authorised parties.

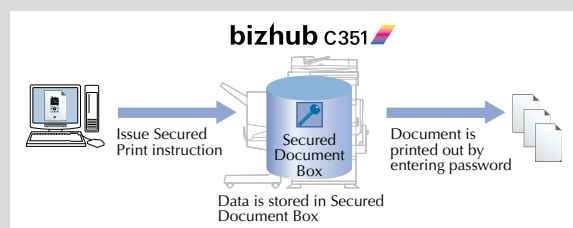
Management

To manage operating costs more effectively, the C351 lets you collect data on how your office equipment is being utilised. It allows you to monitor usage conditions and make setting and control adjustments easily via a network PC.

To ensure high security, the C351's password protection function restricts access to data by unauthorised people. Plus, an encryption protocol and the network server authentication function keep data confidential and safe when exchanged over the network.

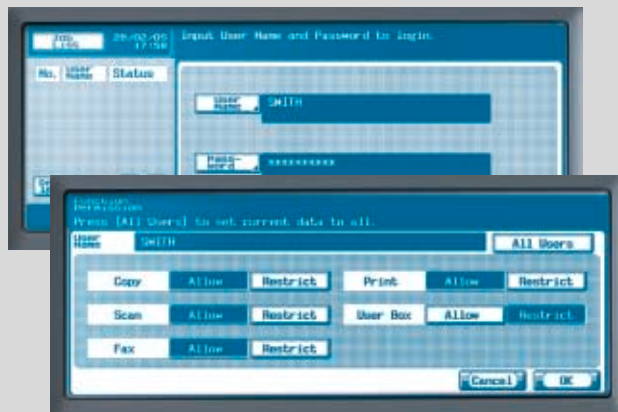
Secured Print Function

A password-based security lock helps prevent unauthorised printing of confidential documents, such as project bids or employee transfer notices. Once a document is locked, it cannot be output unless the correct password is entered on the control panel.



User Authentication

You can allow, disallow, or restrict the use of the C351 based on the authentication function of the Active Directory service, which is used to manage user and computer information on the network. The C351 also features an authentication system that lets you specify user privileges on an individual level without a dedicated server.



HDD Lock

By using a unique compression technology, the data accumulated and stored on the hard disk drive is extremely difficult to analyse. Furthermore, a password-protected lock can be applied to the hard disk drive, preventing readability even if the drive is removed from the C351.

SMTP Authentication for E-Mail

The C351 supports SMTP authentication for outgoing e-mails. To prevent improper use of the mail server when sending mail, users must enter both an ID number and a password.

IP Filtering

This gives access only to terminals with specified IP addresses. It prevents unauthorised access from external locations.

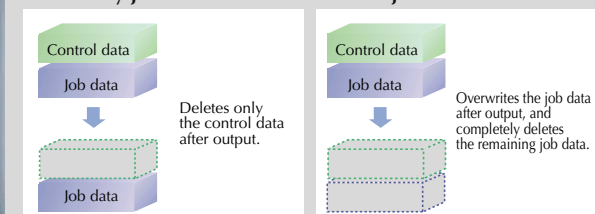
Data Encryption

The SSL encryption protocol is used to protect data during data exchange between the C351 and the LDAP server, PageScope Data Administrator, and PageScope Web Connection.

Automatic Job Data Deletion

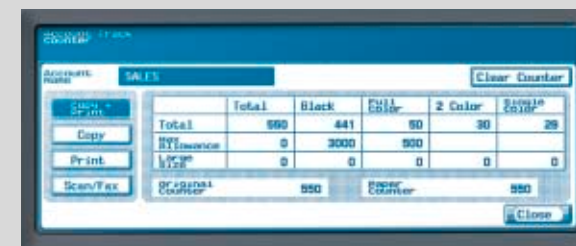
This function prevents the leaking of important data by overwriting and deleting job data that remains on the hard disk after copying, printing, scanning or faxing.

Ordinary job data deletion C351 job data deletion



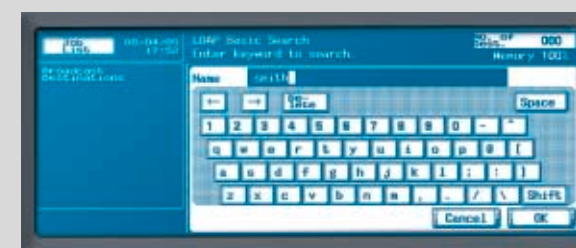
Department Management

Register up to 1,000 departments, then monitor the number of copies, printouts, and scanned pages (both colour and black-and-white) created by each department. To prevent waste, you can also set a maximum number of outputs for each department. By linking with the user authentication function, the C351 lets you combine department and user operation management to provide you with even more efficient and detailed department management.



LDAP Search

Managing and updating e-mail addresses are a snap with this function. By supporting the Lightweight Directory Access Protocol, the C351 lets you search for addresses by department or by keywords such as names. By combining several search criteria, you can do an advanced search for increased efficiency. You can search for up to 120 addresses at once and quickly register them in the C351.



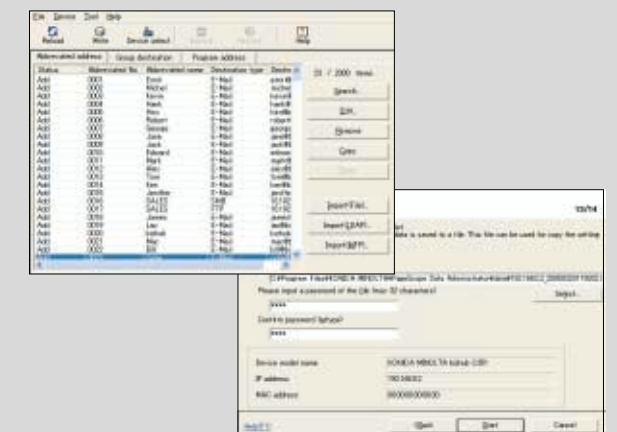
PageScope Web Connection

By using this software, you can make a number of settings on the C351, and confirm its operating status via a Web browser. It also lets you confirm the job status and results, set destinations for scanned data, and create Boxes in the C351.



PageScope Data Administrator

You can upload all addresses stored on a network PC into the C351, and register them for one-touch addressing with this function. PageScope Data Administrator lets the C351 import and export address books, making it easy to update address information. Data Administrator can also create a backup address book and upload it into the C351 for use as needed.



Document Output

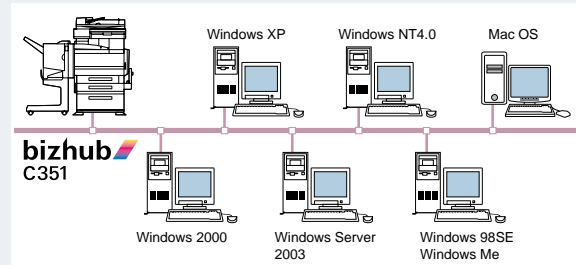
Naturally, the C351 lets you print documents from any PC on the network. But add on the versatile optional finisher which enables complete booklet production—including functions like automated pagination, saddle stitching, stapling, and more—and you'll take advantage of all the benefits of full-colour, on-demand printing.

All the paper-feed trays are designed to accommodate a wide variety of paper sizes and types. Plus, with the C351's standard duplexing and numerous finishing functions, you can quickly and easily create sophisticated documents in-house.

Standard Network Printer Function/Multi-OS, Multi-Protocol Compatibility

Print text and graphics from any PC on the network with this function. The multi-OS, multi-protocol capability with PostScript-compatible mode allows use of the C351 on networks using Windows, Macintosh, and UNIX.

Multi-platform Compatibility



Multi-Job

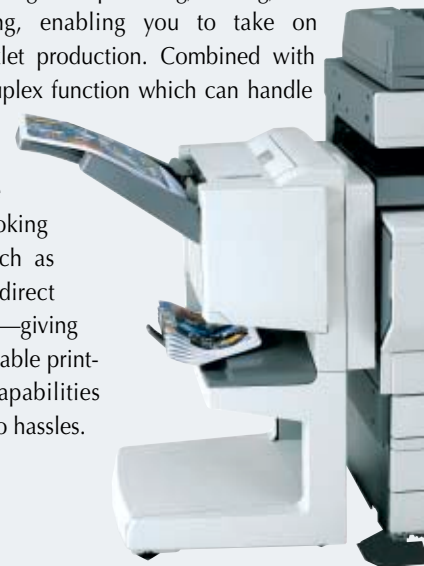
The C351 handles multiple tasks at once. For example, while outputting one job, it can scan a document or receive print data for the next job. You can register a list of up to 250 jobs, then rearrange, skip or delete jobs as desired. This multi-tasking capability improves the office work flow and productivity.

Outputting Data in a Box

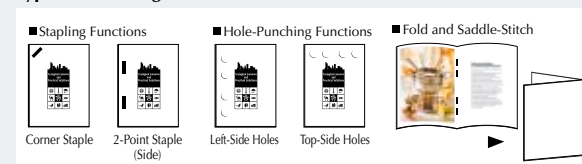
Data from a copy job or print job stored in a Box can be output as many times as needed. Because there's no need to re-copy or re-send a lengthy document from a PC to the C351, you get prints quickly. The C351 also has a job-binding function that lets you take copy data and print data stored in a Box, and bind them together for outputting as a single document. You can also change the finishing settings or the number of prints as desired.

Advanced Finishing Functions

For quick, easy document assembly and production, two types of optional finisher units can be set to automatically perform a series of operations such as sorting and stapling. The FS-603 finisher unit is equipped with advanced functions including hole punching, folding, and saddle stitching, enabling you to take on complete booklet production. Combined with the standard duplex function which can handle thick paper (up to 256 g/m²), you can create professional-looking documents, such as manuals and direct mail, in house—giving your office valuable print-on-demand capabilities with virtually no hassles.



Types of Finishing Functions



Finishing Functions	FS-507	FS-603	FS-603+PK-501
Shift Sort	Yes	Yes	Yes
Corner Staple	Yes	Yes	Yes
2-Point Staple (Side)	Yes	Yes	Yes
Hole Punch (Left-Side Holes)	Yes	No	Yes
Hole Punch (Top-Side Holes)	Yes	No	Yes
Fold and Saddle-Stitch	No	Yes	Yes

Large Paper Capacity/Thick-Paper Compatibility

Holding up to 3,400 sheets*¹ (80-g/m² paper), the C351 gets a lot of work done between refills. It's extremely versatile, too. The Multiple Bypass Tray allows continuous feeding of up to 150 sheets. All paper feed sections handle thick paper (up to 256 g/m²). Paper feed cassettes handle sheets ranging in size from A6 to A3 Wide (311mm × 457mm), as well as thick paper, label sheets, coloured paper*² and more.

*¹ Requires the optional PC-402 paper feed cabinet.

*² A3 Wide paper, post cards, envelopes, and OHP sheets must be fed from the first drawer or Multiple Bypass Tray.



Auto Tray Change

For long, uninterrupted job runs, the C351 automatically switches to another tray that has paper of the same size in the same orientation whenever a tray has run out of paper.

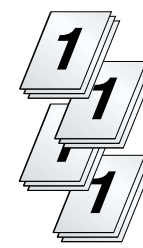
Proof and Print

To prevent wasted prints due to incorrect settings, the C351 can output a set of prints as a sample for you to proof prior to starting a multi-copy run.

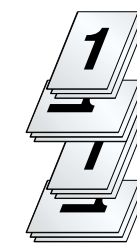
Electronic Sorting

The C351 can sort printouts even without a finisher, saving you time and trouble.

Shift sorting
(With finisher)



Crisscross sorting
(Without finisher)



*These sort functions work only when printing on A4 or B5 size paper. When using the crisscross sorting function, you must set the paper in both the lengthwise and crosswise directions.

Watermark

This function stamps a watermark such as "Confidential" or "Important" on each printout, saving you the time and hassle of doing it by hand.



Cover Sheet

You can insert cover pages at the beginning and end of a set of copies or prints. Simply insert colour or other pages in the designated paper cassette to create attractively covered booklets.



High-Quality & High-Speed

What's the C351's secret for superior image quality? Advanced technologies such as improved scanning accuracy, advanced image processing, and polymerised toner for vibrant colour reproduction. The C351 not only delivers impressive business documents, but it also achieves the superior image quality required in such areas as graphic design.

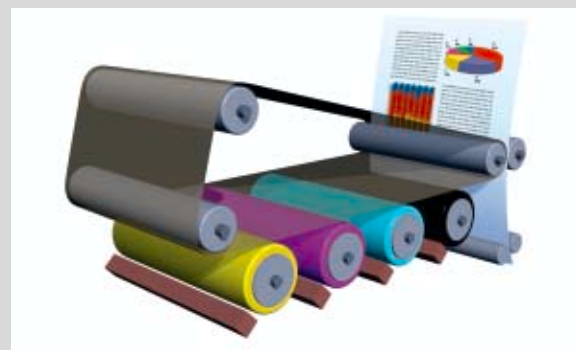


Fiery Image Controller

Take the C351's performance up a notch with the optional Fiery Image Controller. Ideal for professionals in desktop publishing, graphic design, and other areas demanding high-end imaging, the Fiery Image Controller permits printing in a PostScript3 environment, plus its multi-OS compatibility allows use on both Windows and Macintosh networks.

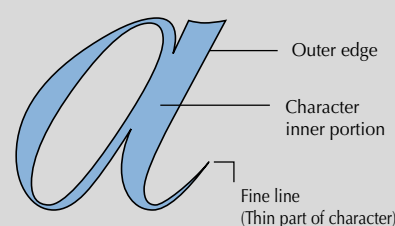
High-Speed 4-Colour Tandem Engine

Our tandem engine enables printing at 35 pages/min in full colour or black-and-white. While in previous models the transfer process took four steps (once for each of the C, M, Y, and K colours), the new engine does it in a single step.



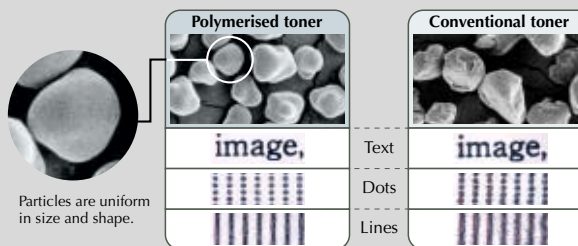
Beautiful Images, Superb Reproducibility

The C351 delivers beautiful, faithful reproductions of the kinds of documents you create most often, such as PowerPoint presentations. It also offers greatly improved scanning accuracy, thanks to the use of character zone micro-separation. This process delineates the outer edges and inner portions of each text character in a scanned document, and it distinguishes among black characters, colour characters and halftone dot areas. It also improves the recognition of text on halftone dot backgrounds, such as in maps and graphs. The result is superior reproduction with minimal blurring and smearing, even when making multiple-generation copies.



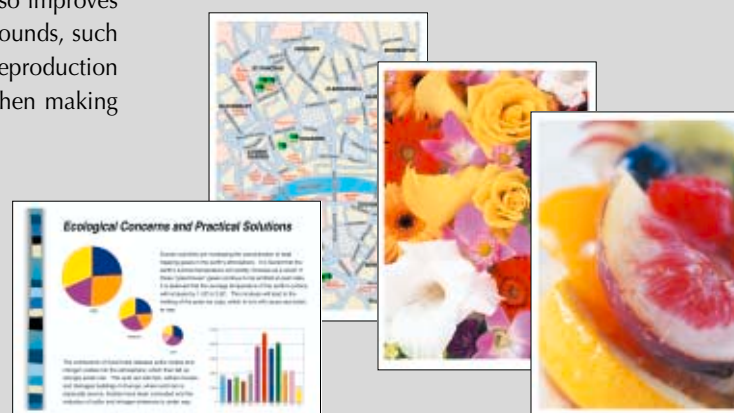
Simitri Toner

The C351 uses eco-friendly polymerised toner with tiny, highly uniform 6.5µm particles that provide superior image quality. This toner also has reduced glare, giving your business documents a natural, sophisticated look. While the toner is oil-free, it is encapsulated in wax to ensure outstanding fixation.



Selectable Image Quality

The C351 lets you select from a variety of image quality and density settings to produce the best results for various types of documents. The Map Mode vastly improves the C351's recognition of text on halftone dot backgrounds. The result is much easier-to-read text when reproducing maps, graphs, and other documents with background patterns. The Photo Mode can reproduce rich colour gradation, while the Glossy Mode makes your photo reproduction look as close to the original as possible.



Scan to Hold Queue

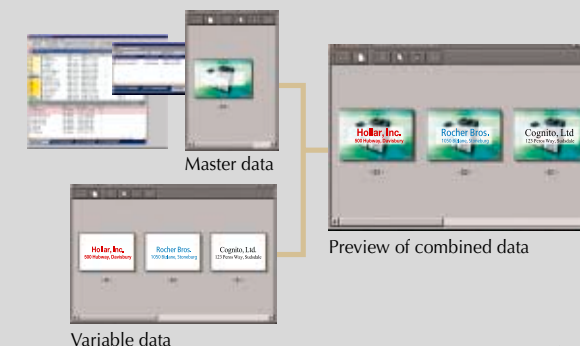
This function holds scanned data in the print job queue. Combined with Command WorkStation, it lets you set the C351 for a variety of outputs.

Scan to Mailbox

Save scanned data onto the IC-402's hard disk drive (Mailbox) with Scan to Mailbox, then access it from a network PC using WebScan or Fiery Remote Scan.

Free Form

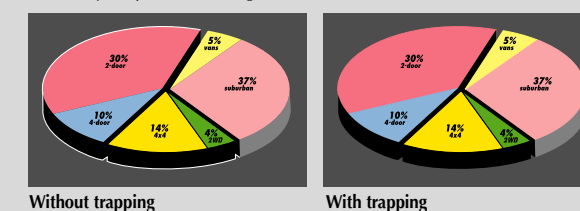
FreeForm gives your office the ability to make variable data printing quick and simple. FreeForm can boost the communication value of your direct mailings or company brochures by letting you individualise each printout. Furthermore, by combining data from separate source applications into a single layout at the print server, print time has been shortened and network traffic reduced.



Auto Trapping*

This function automatically traps colour areas to prevent colours from shifting when outputting from ordinary office applications that do not include DTP functions.

*The Fiery Graphic Arts Package needs to be installed.



ColorWise3.0

ColorWise can be used with a variety of software applications, operating systems, and virtually any file format. ColorWise is able to handle RGB, CMYK, Lab, as well as spot colour data seamlessly, even when mixed on the same page.

Enhanced Colour Control

Enables you to take advantage of independent controls for RGB and CMYK data within the same document. ColorWise automatically recognises PANTONE and other spot colour names, and then selects the best CMYK match.

Fiery Calibrator

You can use the scanner function as a highly precise colour measurement device to calibrate the C351. AutoCal2 measures 34 patches for each colour, and ColorCal further raises the level of precision with a total of 60 patches.

Full Output GCR

Based on output Grey Component Replacement (GCR), source CMYK values are re-calculated so even images with 100% black are properly grey-balanced.



Black Overprint

Black overprint ensures sharp text against any colour background without white outlines, also known as "halos," that are caused by image creep.



Universal Design

In business, men and women of all sizes and ages work together. With this in mind, Konica Minolta designed the C351 adopting numerous universal design elements to ensure maximum ease-of-use for the widest range of users as well as a visually attractive body.



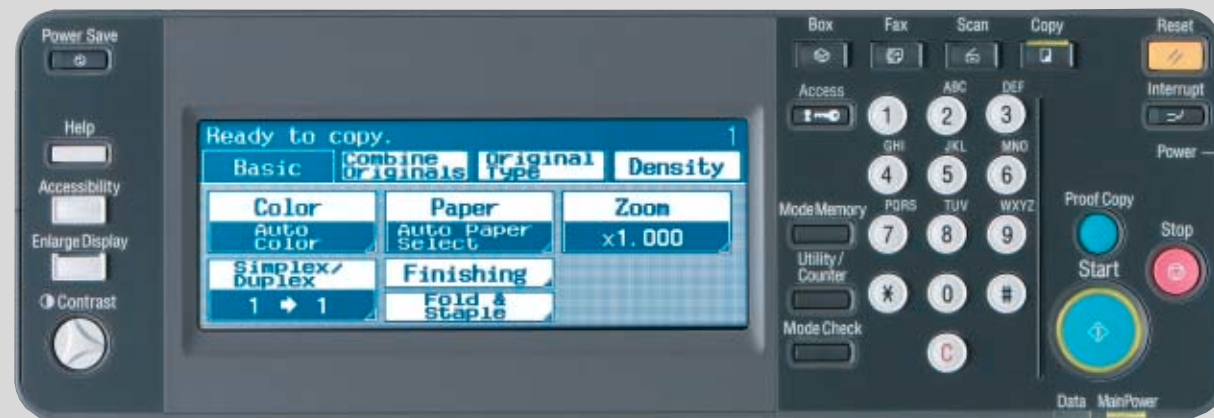
■ The panel can be adjusted to three different angles.



■ The “Help” button shows the operation procedure and the names of various functions.

■ The LCD panel display can be enlarged, as shown in the photo, for easy viewing.

■ The contrast of the display can be adjusted as needed.



■ The large, clear LCD is easy to read.

■ The sub-power switch is located on the control panel, enabling you to turn the power on/off right from the panel.

■ Buttons have large, easy-to-see indications and a simple, logical layout.



Universal Design Control Panel

The control panel is critical to operating ease. That’s why the C351’s panel was designed to provide the utmost in user-friendly operability. Its large, clear, easy-to-read LCD located on a panel that can be tilted 7, 27, or 45 degrees suits the needs of any operator. Set against the dark panel, the white buttons are easy to see, and their size and layout have been carefully considered for enhanced operation.

Semitransparent ADF Paper Path

The C351 uses a semitransparent material for the Automatic Document Feeder’s paper path. This makes it easier to check for originals, and speeds up the removal of paper jams.

Improved Visibility of Paper Output Tray

The paper output tray is a dark grey that contrasts with the paper, making it easier to tell the document from the tray.

Front Access Structure

Since the toner cartridge and paper can be replaced quickly and easily from the front, there’s no need to move the unit. This keeps downtime to a minimum.

Easy Paper Replenishment

The new free-grip handles let you grip from either above or below, making it a snap to open and close the paper feed cassettes, even the bottom cassette. You can easily change the paper size by adjusting the paper guide located within the cassettes.

Easier Paper-Jam Removal

The C351 introduces a simpler paper-path design and a wide-opening right side cover. These features let you remove paper jams quickly and easily by simply opening only a single cover.